

SCANSMITH EASY SCAN User Guide

*Version 4.0
September, 1997*

Foreword

This document covers the SCANSMITH EASY SCAN software product. ANA Tech believes the information in this document is accurate as of its publication date. Software features are subject to change.

Document Conventions

The following typographical conventions are used throughout this manual:

Text to be entered via the keyboard appears in a monospaced font as follows:

`enter this text`

Emphasized text appears in italics:

this is emphasized text

Text that cautions the user about actions that may result in injury, equipment or software damage or malfunction, or may interfere with the proper operation of the scanner is preceded by the word **Warning**.

Text that presents useful information or valuable tips may be preceded by the word **Note**.

Publisher Information

Published by ANA Tech / an Intergraph Division:

ANA Tech / an Intergraph Division

10499 Bradford Road

Littleton, Colorado 80127

U.S.A.

Copyright September, 1997, ANA Tech an Intergraph Division, Littleton, CO U.S.A. All rights reserved. Printed in the United States of America. ANA Tech is a registered trademark of Intergraph Corporation. Eagle and SCANSMITH are trademarks of ANA Tech / an Intergraph Division. Windows® 95 and Windows® are registered trademarks of Microsoft® Corporation. Windows NT™ is a trademark of Microsoft® Corporation. Other trademarks of products and services listed in this document are trademarks of their respective companies.

SCANSMITH EASY SCAN User Guide

Table of Contents

EASY SCAN	1
How to Use EASY SCAN.....	2
Selecting a Document Type	3
Document Types	4
Document Type Dialogs	5
Custom Document Types	6

SCANSMITH EASY-SCAN

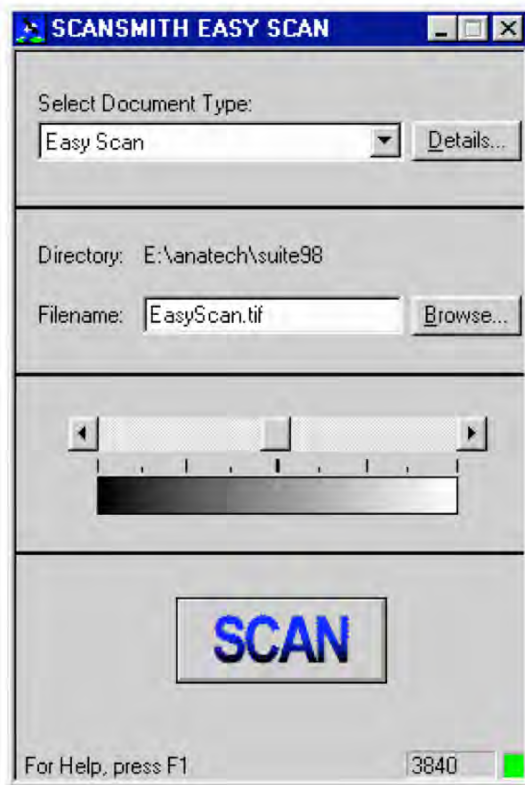
EASY SCAN

SCANSMITH EASY SCAN operates ANA Tech Eagle black and white scanners, including the Eagle Evolution and Eagle SLI series scanners. EASY SCAN provides an easy to use interface to minimize the complexity of scanning operations.

To use EASY SCAN, start EASY SCAN and select the Document Type for the type of drawing you want to scan. Enter a filename for the output scan file. You can also adjust the lightness or darkness of the output data using the brightness control slider.

When ready, press SCAN. The scanner starts and the output is saved to disk. See the pages that follow for more detailed instructions.

Note EASY SCAN is provided with workspaces to operate the Eagle Evolution and Eagle SLI scanners. EASY SCAN will run other Eagle scanners. To prepare EASY SCAN to run other ANA Tech scanners, run SCANSMITH SCAN and set up SCAN parameters as needed. Use the File-Workspace-Save option in SCAN to create a scanning workspace that you can load in EASY SCAN.



How to Use EASY SCAN

1. Start EASY SCAN.
2. Select the Document Type. See the next section for an explanation. You can review Document Type settings, if needed, by pressing the Details button.
3. Select an output filename. You can enter the filename or use the Browse button. The browse button brings up a Windows file selection dialog.
4. Adjust the brightness slider as needed. Moving the slider to the right makes the scanned data lighter, and moving the slider to the left makes the scanned data darker. The slider starts out in the center which uses the workspace settings with no change.
5. Press the SCAN button.

Selecting a Document Type

Use the mouse to select the document type, as shown below. When the list of document types appears, use the mouse to highlight one of the available Document Types.

Use the Document Type selector to choose a document type.

Press the Details button to display a description of the scan settings.

Enter the name for the output file here.

Slide to right for lighter output; slide to left for darker output.

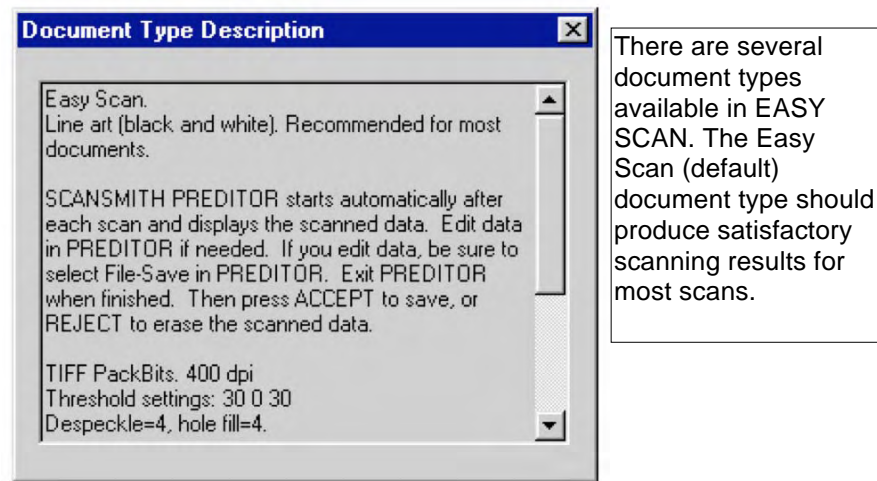
Pressing the SCAN button starts the scan.

Pressing the Details button displays a description of the scanner settings.

Document Types

The Document Type control selects a set of scanner settings. The scanner settings are set up for different types of documents and different types of scanning situations. Eagle scanners have many settings that can be used to control scanner output. These settings include brightness controls (also called thresholding) and other features including automatic smoothing and despeckling of scanned output data. You do not need to control any of these settings when operating EASY SCAN. Instead, all settings needed to scan a particular type of document are stored in the Document Type selection.

The Document Type Description dialog provides a brief description of the scanner settings for each included Document Type, and a summary of the scanning procedure to use with these scanner settings. Also, you can scroll down the Document Type Description dialog to examine the detailed scanner settings, if you wish.



Some of the available Document Types include:

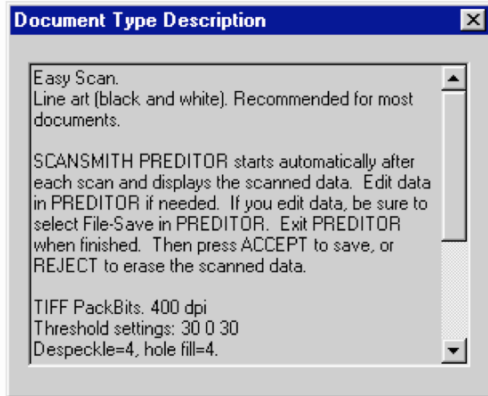
- Easy Scan. This line art (black and white) Document Type is recommended for most scans. 400 dpi.
- Easy Scan Draft. This line art (black and white) Document Type is recommended for most scans that do not need high resolution. 200 dpi.
- Archive “Scan and Go.” Recommended for scanning large archives of multiple documents, this Document Type uses the Eagle Evolution and Eagle SLI automatic document handling features and also applies automatic numbering to the output files, so you do not need to type in each output filename. 400 dpi.
- Grayscale. This Document Type outputs grayscale data, suitable for scanning for photos, satellite images, and other continuous tone documents. 100 dpi.

Note You can view a description of any Document Type by selecting it and then pressing the Details button.

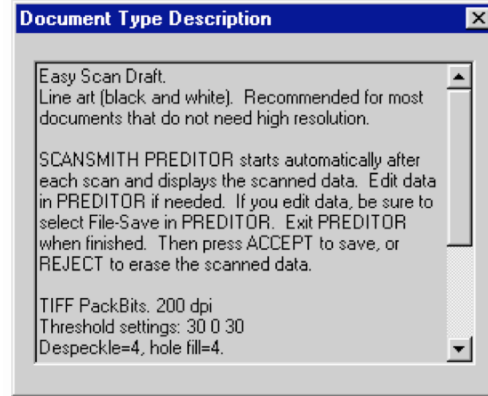
Document Type Descriptions

The Document Types Descriptions for Document Types included in EASY SCAN are listed in the dialogs below. You can view Document Type descriptions in EASY SCAN by pressing the Details button.

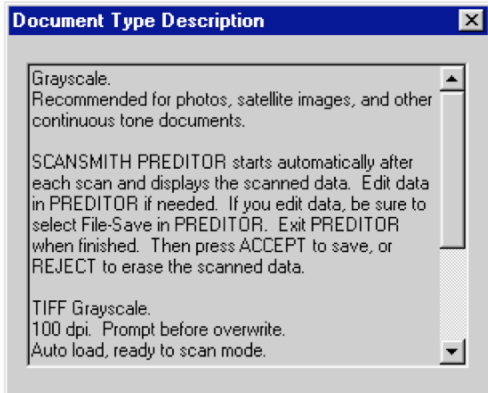
Easy Scan



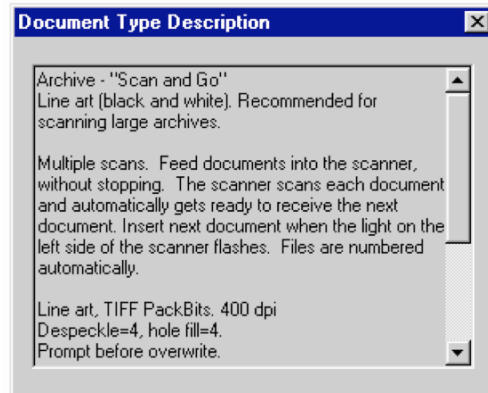
Easy Scan Draft



Grayscale



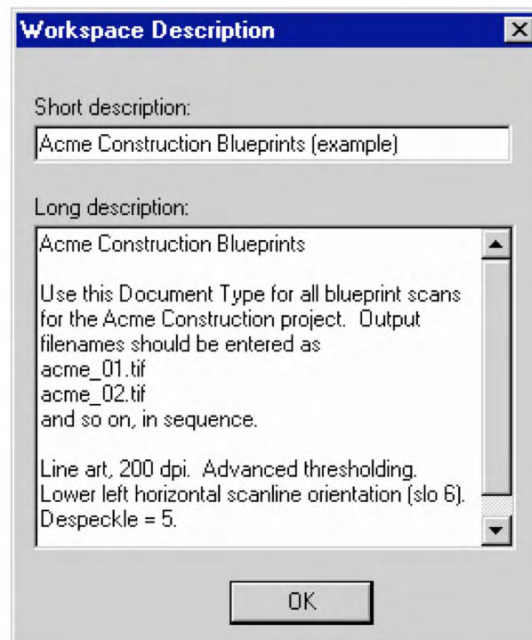
Archive - "Scan and Go"



Custom Document Types

You can add custom Document Types to those that come pre-supplied with EASY SCAN. EASY SCAN Document Types are saved in SCANSMITH SCAN as *workspaces*. SCANSMITH SCAN is the full featured scanner interface designed for advanced scanner users. Follow these steps to configure a new Document Type for use with EASY SCAN.

1. Run SCANSMITH SCAN.
2. Set up scanning parameters as needed.
3. Select File-Workspace-Save.
4. Select a filename for the workspace. Save the workspace in the `\easyscan` subdirectory. Use a `.WSP` file extension.
5. Next, a workspace description dialog appears. In the *Short description* field, enter a Document Type description as you want it to appear in the EASY SCAN Document Type selector. Enter a long description which will appear when the user presses the Details button in EASY SCAN. For example, the pre-configured Document Types that come with EASY SCAN list the name of the Document Type, brief instructions for use of the Document Type, a more detailed list of scanner settings for the Document Type, and the filename.



7. Exit SCANSMITH SCAN.
8. Run EASY SCAN. The new Document Type is now available in EASY SCAN.