

# **SCANSMITH EASY SCAN-C User Guide**

*Version 5.0  
January, 1998*



## Foreword

This document covers the SCANSMITH EASY SCAN-C software product. ANA Tech believes the information in this document is accurate as of its publication date. Software features are subject to change.

## Document Conventions

The following typographical conventions are used throughout this manual:

Text to be entered via the keyboard appears in a monospaced font as follows:

```
enter this text
```

Emphasized text appears in italics:

*this is emphasized text*

Text that cautions the user about actions that may result in injury, equipment or software damage or malfunction, or may interfere with the proper operation of the scanner is preceded by the word **Warning**.

Text that presents useful information or valuable tips may be preceded by the word **Note**.

## Publisher Information

Published by ANA Tech / an Intergraph Division:

ANA Tech / an Intergraph Division

10499 Bradford Road

Littleton, Colorado 80127

U.S.A.

Copyright January, 1998, ANA Tech an Intergraph Division, Littleton, CO U.S.A. All rights reserved. Printed in the United States of America. ANA Tech is a registered trademark of Intergraph Corporation. Eagle and SCANSMITH are trademarks of ANA Tech / an Intergraph Division. Windows® 95 and Windows® are registered trademarks of Microsoft® Corporation. Windows NT™ is a trademark of Microsoft® Corporation. Other trademarks of products and services listed in this document are trademarks of their respective companies.



SCANSMITH EASY SCAN-C User Guide

# Table of Contents

|  |          |
|--|----------|
| <b>EASY SCAN-C .....</b>               | <b>1</b> |
| <b>How to Use EASY SCAN-C.....</b>     | <b>2</b> |
| <b>Selecting a Document Type .....</b> | <b>3</b> |
| <b>Document Types .....</b>            | <b>4</b> |
| <b>Document Type Dialogs .....</b>     | <b>5</b> |
| <b>Custom Document Types .....</b>     | <b>6</b> |



# SCANSMITH EASY-SCAN-C

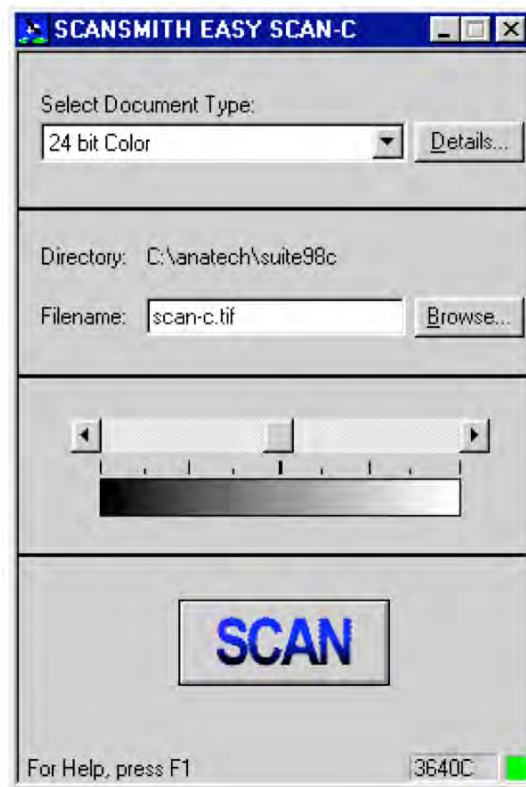
## EASY SCAN-C

SCANSMITH EASY SCAN-C operates ANA Tech Eagle color scanners, including the Eagle 3640C, Eagle 4240C, Eagle 4080C, and Eagle 6250C scanner models. EASY SCAN-C provides an easy to use interface to minimize the complexity of scanning operations.

To use EASY SCAN-C, start EASY SCAN-C and select the Document Type for the type of drawing you want to scan. Enter a filename for the output scan file. You can also adjust the lightness or darkness of the output data using the brightness control slider.

When ready, press SCAN. The scanner starts and the output is saved to disk. See the pages that follow for more detailed instructions.

**Note** EASY SCAN-C is provided with several workspaces. To prepare other EASY SCAN-C workspaces, run SCANSMITH SCAN-C and set up SCAN-C parameters as needed. Use the File-Workspace-Save option in SCAN-C to create a scanning workspace that you can load in EASY SCAN-C.

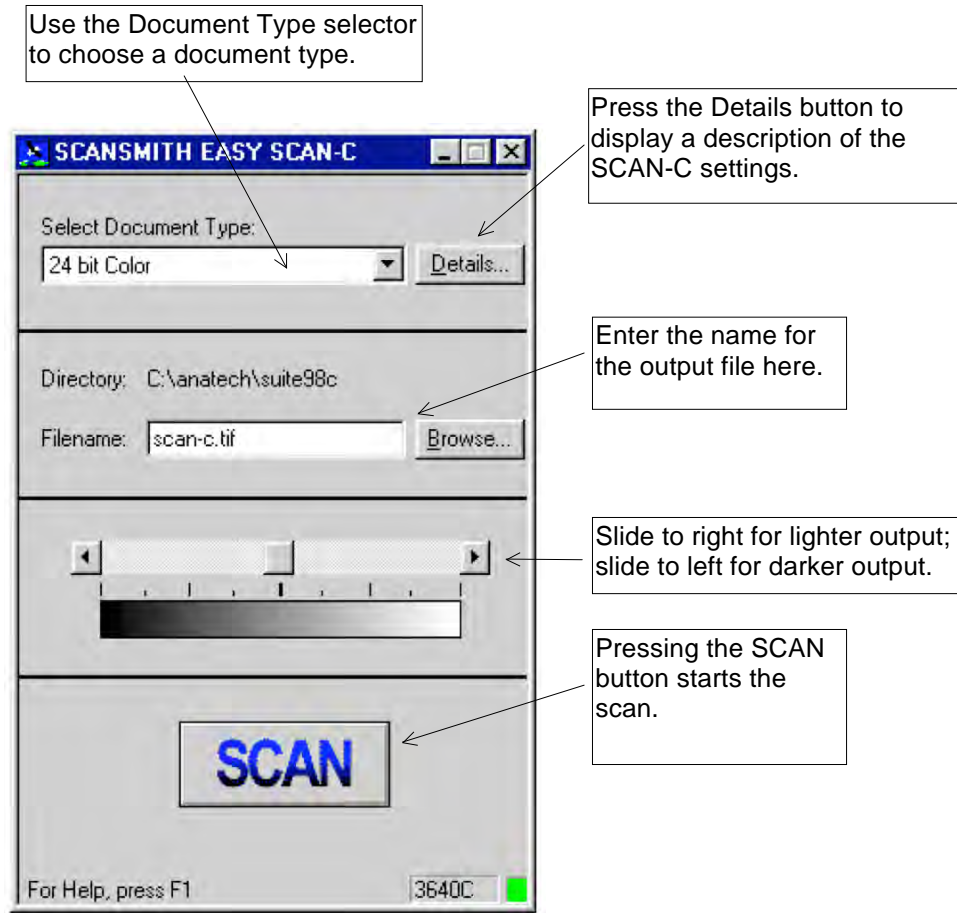


# How to Use EASY SCAN-C

1. Start EASY SCAN-C.
2. Select the Document Type. See the next section for an explanation. You can review Document Type settings, if needed, by pressing the Details button.
3. Select an output filename. You can enter the filename or use the Browse button. The browse button brings up a Windows file selection dialog.
4. Adjust the brightness slider as needed. Moving the slider to the right makes the scanned data lighter, and moving the slider to the left makes the scanned data darker. The slider starts out in the center.  
For 24 bit color data, the brightness adjustment is applied to the pixel values of the data. For palette data, the brightness adjustment is applied to the palette.
5. Press the SCAN button.

# Selecting a Document Type

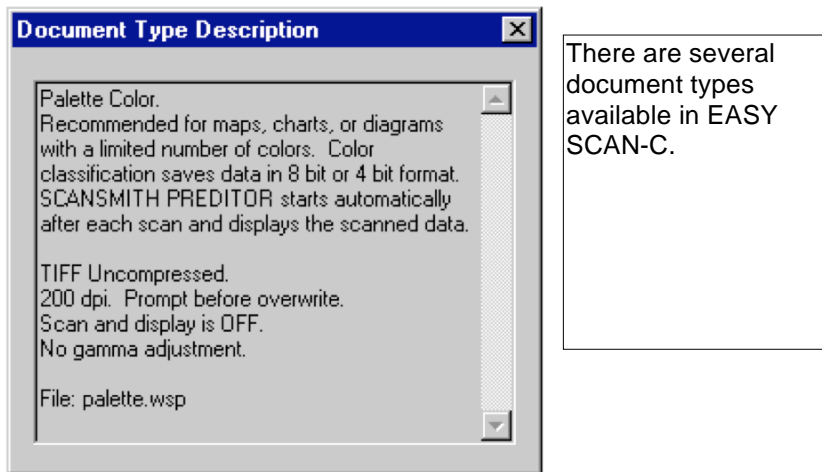
Use the mouse to select the document type, as shown below. When the list of document types appears, use the mouse to highlight one of the available Document Types.



# Document Types

The Document Type control selects a set of scanner settings. The scanner settings are set up for different types of documents and different types of scanning situations. Eagle scanners have many settings that can be used to control scanner output. These settings include brightness controls (also called thresholding) and other features including automatic smoothing and despeckling of scanned output data. You do not need to control any of these settings when operating EASY SCAN-C. Instead, all settings needed to scan a particular type of document are stored in the Document Type selection.

The Document Type Description dialog provides a brief description of the scanner settings for each included Document Type, and a summary of the scanning procedure to use with these scanner settings. Also, you can scroll down the Document Type Description dialog to examine the detailed scanner settings, if you wish.



Some of the available Document Types include:

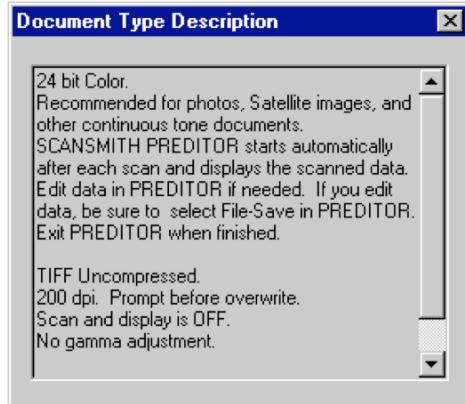
- 24 Bit Color. This RGB color Document Type is recommended for scanning photographs or other continuous tone color data. 200 dpi.
- Palette. This 8 bit color Document Type uses color classification and is recommended for maps and color diagrams. 200 dpi.
- Grayscale. Use this workspace to generate grayscale output data from the color scanner. This Document Type is recommended for scanning black and white photographs or other continuous tone monochrome data. 200 dpi.
- Bi-level. This Document Type outputs black and white data, suitable for scanning black and white line drawings. 200 dpi.

**Note** You can view a description of any Document Type by selecting it and then pressing the Details button.

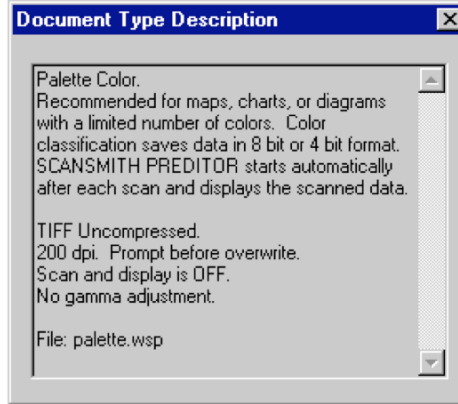
# Document Type Descriptions

The Document Types Descriptions for Document Types included in EASY SCAN-C are listed in the dialogs below. You can view Document Type descriptions in EASY SCAN-C by pressing the Details button.

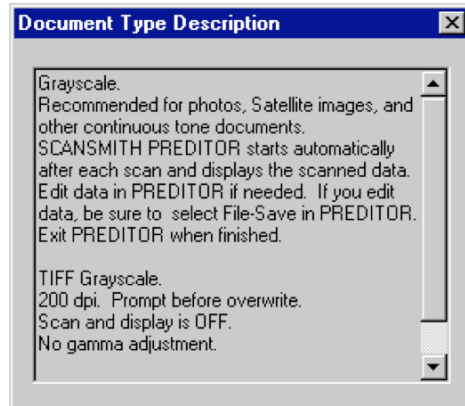
## 24 Bit Color



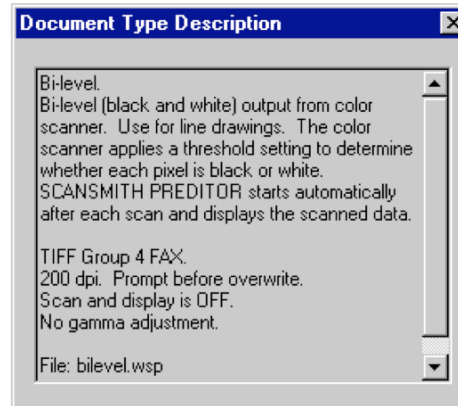
## Palette Color



## Grayscale



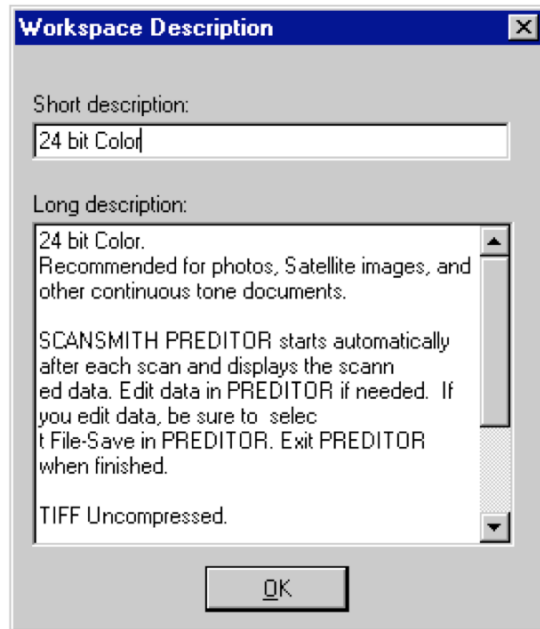
## Bi-level



# Custom Document Types

You can add custom Document Types to those that come pre-supplied with EASY SCAN-C. EASY SCAN-C Document Types are saved in SCANSMITH SCAN-C as *workspaces*. SCANSMITH SCAN-C is the full featured scanner interface designed for advanced scanner users. Follow these steps to configure a new Document Type for use with EASY SCAN-C.

1. Run SCANSMITH SCAN-C.
2. Set up scanning parameters as needed.
3. Select File-Workspace-Save.
4. Select a filename for the workspace. Save the workspace in the **easyscan** subdirectory. Use a .WSP file extension.
5. Next, a workspace description dialog appears. In the *Short description* field, enter a Document Type description as you want it to appear in the EASY SCAN-C Document Type selector. Enter a long description which will appear when the user presses the Details button in EASY SCAN-C. Press OK when ready.



7. Exit SCANSMITH SCAN-C.
8. Run EASY SCAN-C. The new Document Type is now available in EASY SCAN-C.