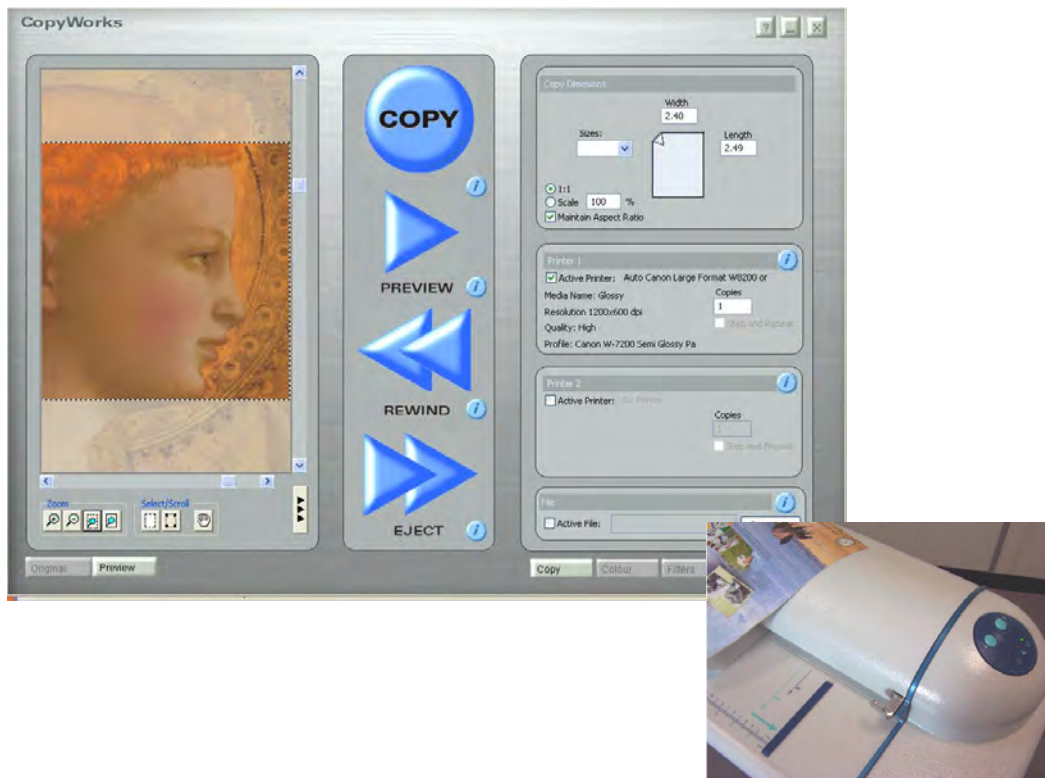


CopyWorks V2.0

easy scan2copy software for Colortrac Scanners

CopyWorks2 Installation and Test Procedure



Contents:

1	Overview of CopyWorks2	1
2	Scanner Maintenance	1
3	Preparation for CopyWorks2 installation	1
4	Installation.....	2
5	Running for the first time and profiling the scanner	2
6	Profiling the Printer.....	3
7	Testing the installation.....	4

1 Overview of CopyWorks2

CopyWorksV2.0 is designed to allow any Series 4 or Flatbed Colortrac scanner when combined with one of the internally supported large format inkjet printers to operate as a large format copier. Quite unlike printing from a viewer using a Windows driver or printing from within a scan to file program, CopyWorks V2.0 permits accurate scaling of the copy with very accurate IT8/7.2 based colour calibration. CopyWorksV2.0 supports multiple copies from a single scan and does not require large computer memory. No special memory enhancements are needed in the target printer/plotter either.

Two versions of CopyWorksV2.0 are available. *CopyWorksV2.0 Standard* is included with every Colortrac scanner but has fixed presets and will produce one copy at a time. *CopyWorksV2.0 Professional* allows multiple copies from a single scan, supports two printers and allows custom presets.



Fig.1 Screenshot showing the screen that will greet all new users of CopyWorks2 before the product is upgraded to the Professional version

2 Scanner Maintenance

It is essential that the scanner is correctly calibrated prior to use

- Warm up the scanner for at least 30 minutes
- Clean the white plastic target with folam cleaner or similar
- Insert the target from the rear of the scanner (sliders set for 5mm)
- Use the CopyWorks I button and press calibrate to start the calibration (5 minutes)

3 Preparation for CopyWorks2 installation

It is essential that any previous CopyWorks software is removed prior to the fresh installation

- Use Add/ Remove software to uninstall any existing CopyWorks
- Manually remove the Printers directory [drive]:\Program Files\Colortrac\CopuWorks\Printers
- Manually remove [drive]:\Program Files\Colortrac\CopuWorks\cw.ini
- Manually remove the Scanners directory [drive]:\Program Files\Colortrac\CopuWorks\Scanners

All pre-made profiles (.icm/.icc) files are found in [Drive]:\Program Files\Colortrac\CopyWorks\Profiles and these can be left. All profiles generated by the user are placed in new folders named scanners and printers.

4 Installation

Log in as Administrator. Using the Software Installation CD or the link provided by Colortrac (save locally first) begin the installation by double-clicking on the setup.exe. It is best to follow the default file locations.

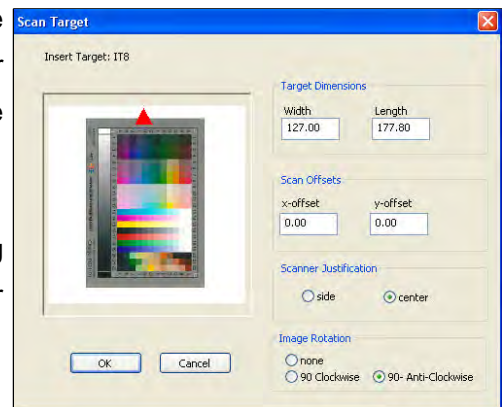
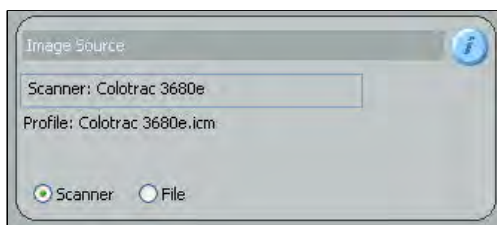
5 Running for the first time and profiling the scanner



If you have properly cleaned your computer from previous scanners and the cw.ini file you should see the prompt above.

Click OK and insert the IT8/7.2 target into the centre of the scanner as shown. After successfully creating the scanner profile CopyWorks should show the scanner and profile in the bottom left-hand corner of the main screen.

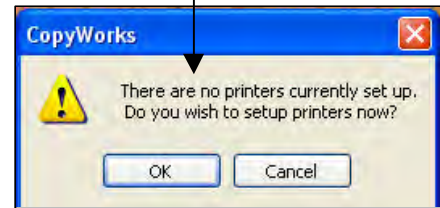
Be certain to use the correct name for the reference file during the scanner calibration process. R011201.txt, R021101.txt or R031128.txt.



This is the first part of CopyWorks profiling finished.

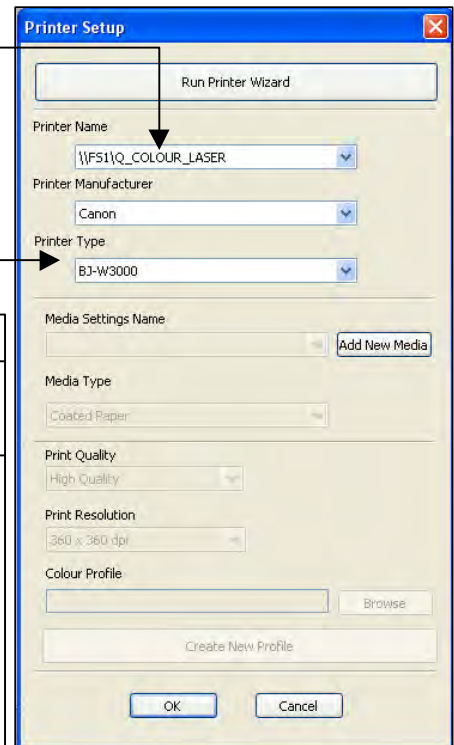
6 Profiling the Printer

Immediately after completing the scanner profiling and if there is no printer directory you will see this message inviting the operator to create a profile for the printer.



- Click the first arrow to browse to the correct Windows system printer queue. If the Windows printer driver for the printer you wish to use does not display install the printer driver again locally on the same computer as the scanner and point it to the same IP address.

- The Printer Manufacturer will normally be self-setting
- Finally select the appropriate Printer Type to match the model you intend to use e.g. BJ-W7200.

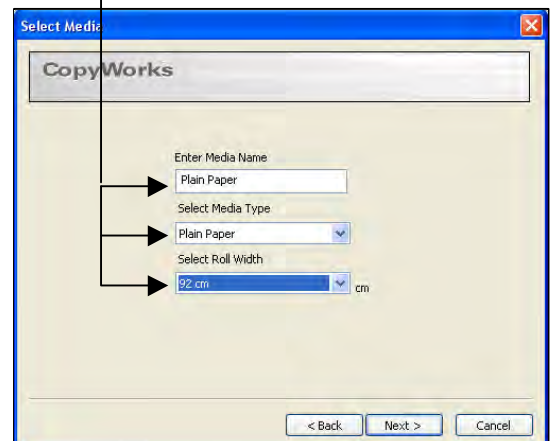
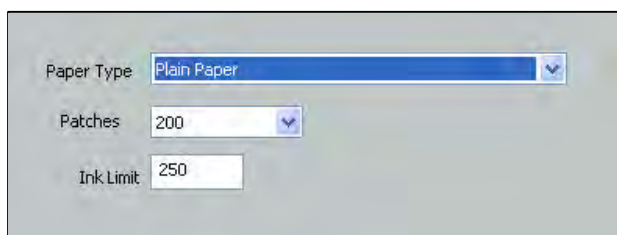
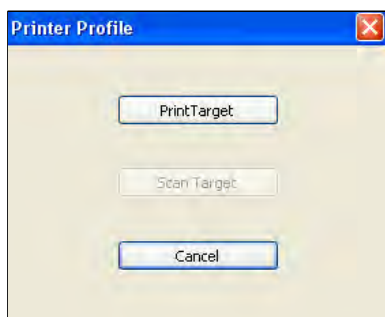


Now click Add New Media

- Type a name to describe the paper loaded in the printer
- Pick the closest type to this from the Select Media Type box
- Select the width of the roll (important for step and repeat)

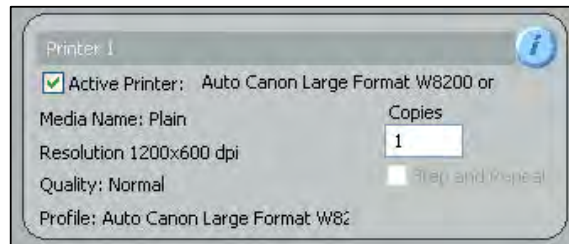
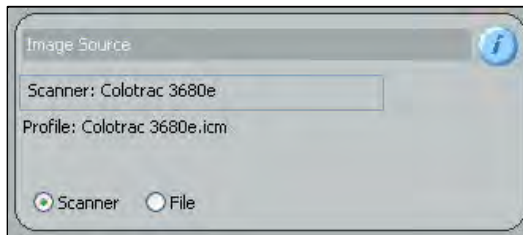
On the next screen select the Print Quality and Resolution

On the next screen go with the default to create a printer profile
At which point the operator will be asked to print out the target – see below.



IMPORTANT: Choose a lower value for Ink Limit if the ink seems saturated on the printed target.

7 Testing the installation



- Check for the presence of the scanner and the correct printer in the main CopyWorks interface
- Insert a document in the scanner and make a Preview. The colours in the Preview are generated from the scanner and the printer profile. If the Preview looks wrong then you may have selected an incorrect profile.

Create three printer profiles for Canon Proofing Paper, Photo Gloss coated paper and plain paper.

Points to remember:

- Always allow the printer target to dry properly before re-scanning
- Do not rescan old targets to make printer profiles
- Do not use sharpening filters for colour sensitive copies – Photo mode, Standard Copy is best
- Make sure you have no filters running – ie check and/or reset them before copying