

Colortrac Copy Manager User Manual

For

Colortrac Large Format Scanners

Models

**380Gx Plus, 360Gx Plus, 340Gx Plus,
360Gx Junior, 380Gx, 360Gx,
380Cx, 360Cx**

© Colortrac 1998

This document should not be copied without prior written permission from:

**Colortrac Ltd
Kings Hall
St. Ives Business Park
St. Ives
Huntingdon
Cambridgeshire
PE17 4WY
United Kingdom**

**Tel: +44 (0) 1480 464618
Fax: +44 (0) 1480 464620**

Colortrac Ltd makes no warranty with respect to this documentation and disclaims any implied warranties of merchantability or fitness for a particular purpose. Information in this document is subject to change without notice. Colortrac Ltd assumes no responsibility for errors that may appear in this document.

Index

INDEX	4
1 GETTING STARTED	6
1.1 SOFTWARE INSTALLATION	6
1.1.1 <i>System Requirements software</i>	6
1.1.2 <i>Software Installation</i>	6
1.2 INITIAL CONFIGURATION	7
2 FIRST COPY	10
3 COPY MANAGER DIALOG.....	11
3.1 ORIGINAL	11
3.1.1 <i>Auto Sizing</i>	12
3.1.2 <i>Original Width</i>	12
3.1.3 <i>Original Length</i>	12
3.2 COPY	13
3.2.1 <i>Copy Width</i>	13
3.2.2 <i>Copy Length</i>	13
3.2.3 <i>Scale</i>	13
3.2.4 <i>Maintain Aspect Ratio</i>	13
3.3 SHARPENING.....	14
3.4 NUMBER OF COPIES.....	14
3.5 NESTED COPIES	14
3.6 BRIGHTNESS	15
3.7 COPY BUTTON	15
3.8 STOP BUTTON.....	16
3.9 REWIND	16
3.10 PRINTER.....	16
3.11 SCANNER.....	16
3.12 OPTIONS.....	16
3.13 HELP.....	17
4 PRINTER DIALOG.....	18
4.1 CURRENT PRINTER	18
4.2 PRINTER PROFILE	19
4.3 PAPER WIDTH.....	19
4.4 OUTPUT QUALITY	19
4.5 OUTPUT TYPE.....	19
4.6 RESOLUTION.....	20

5	SCANNER DIALOG	21
5.1	SCANNER PROFILE.....	21
5.2	RECALIBRATE	21
5.3	AUTOSTITCH	21
6	OPTIONS DIALOG.....	22
6.1	UNITS	22
7	PRINTER PROFILING.....	23

1 GETTING STARTED

Before installing the scanning software you should have read the Installation and Operating Manual and the scanner should be connected to your computer, the SCSI chain properly terminated and the scanner switched on.

You should have also installed the software for your SCSI interface card. If in doubt please consult your supplier.

It is recommended that all of section 1 and section 2 be read before attempting to use the software.

1.1 Software Installation

1.1.1 System Requirements software

The minimum specification for the PC is as follows:

Microsoft™ Windows™ 98
Pentium™ processor.
800 * 600 64k colours graphics card.
32 Mb memory.
70 Mb of disk space.

Considerably more disk space may be required for spool files created during the copying process.

1.1.2 Software Installation

To install the software, insert floppy disk 1 or CD into the drive. Then, either:

- Use run from the Windows 98 Start Menu and type x:\setup at the prompt, where x is the drive identifier

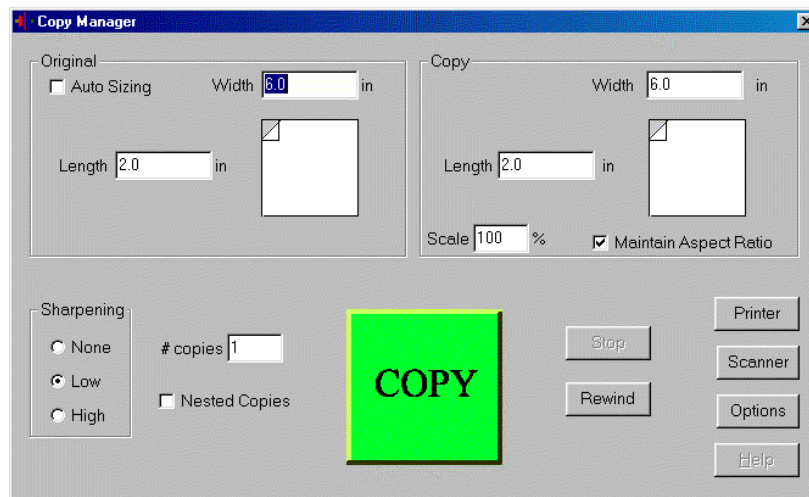
Or

- Using Windows Explorer double click on the x:\setup.exe file.

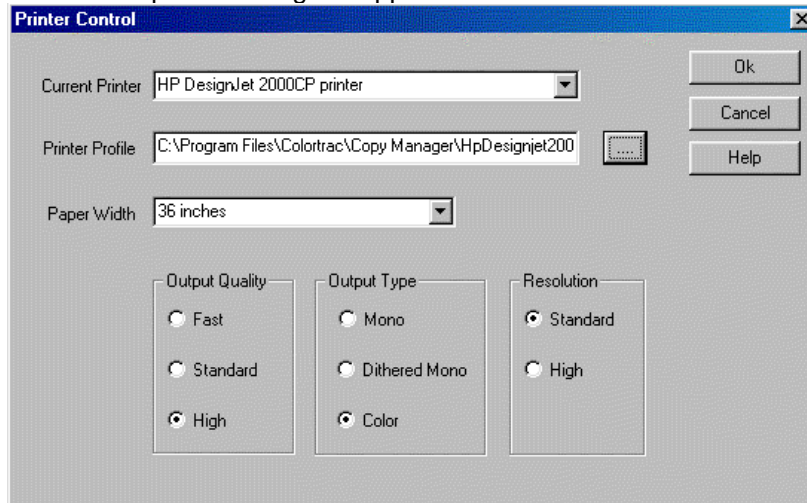
Then follow the prompts provided.

1.2 Initial Configuration

- Install the standard Windows printer drivers for any printers which are going to be used with Copy Manager.
- Reboot the system first making sure that the printer and scanner are connected and turned on.
- Increase the printer timeouts in the Windows printer driver to at least 800 seconds. The printer timeout value can be found on the details tab of the Windows printer properties dialog.
- Start the copy manager program and Main dialog will appear as shown:

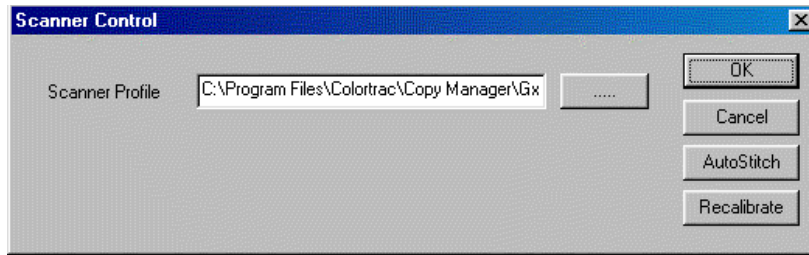


- To set the Printer up press the printer button and the printer dialog will appear as shown:



- Select the required printer from the list in the drop down box current printer box.
- Select and ICC profile to match the printer. To do this, press the browse button and then select the appropriate file. All ICC profile files are of the format "*.icm". Typically the profile name will reflect the name and model number of the printer and also indicate the ink and paper type.
- Leave the rest of the options in their default positions and press the Ok button to return to the main dialog.

- The scanner profile must then be set-up. To do this press the Scanner button and the Scanner dialog will be shown:



- Select the scanner profile by pressing the browse button and choosing the profile file, typically this will be called "ColortracGx3x0HiSat.icm".
- If this is a new scanner that has not been run with the Scan Manager software Autostitch must be carried out, see the Operations manual for more details.

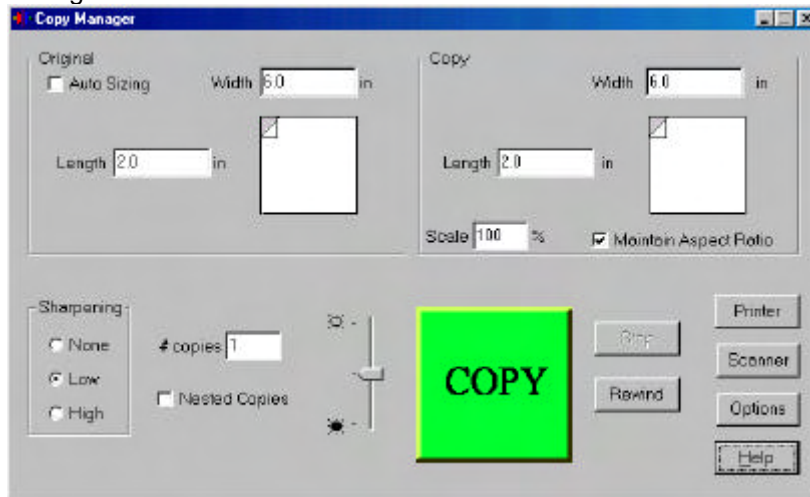
2 First Copy

To produce your first copy:

- Place your original in the centre of the scanner (Note: Copy Manager always requires documents to be centre justified in the scanner).
- In the Original section of the Copy Manager dialog set the width and height of paper.
- Leave all other setting on their defaults.
- Press the large green copy button. The button should turn red and the document should start to feed into the scanner. After a few seconds the printer will begin to print.

3 Copy Manager Dialog

This section describes the controls on the main User Interface Dialog as shown:



3.1 Original

The Original section of the dialog contains the following controls:

3.1.1 Auto Sizing

When checked, this option turns the system into auto sizing mode i.e. the system will determine the size of the original. To use the system in this mode the original should be placed in the centre of the scanner with a minimum offset of 10mm (3/8 "). Both the original width and length edit boxes, and the copy width and length edit boxes will be greyed out to prevent modification. The copy may, however, be scaled using the scaling edit box. On pressing the copy button the Copy Manager system will attempt to compute the width of the original. In a small number of cases it may fail to do this, then width and length of the original should then be set manually.

Note: Auto sizing will not work on documents longer than 1.3 Metres when using a HP plotter.

3.1.2 Original Width

This edit box allows the width of the document to be selected. The units may be inches or mm depending on the value selected in the options dialog.

3.1.3 Original Length

This edit box allows the length of the document to be selected. The units may be inches or mm depending on the value selected in the options dialog.

3.2 Copy

The Original section of the dialog contains the following controls:

3.2.1 Copy Width

This edit box allows the width of the copy to be selected. The units may be inches or mm depending on the value selected in the options dialog. If the Maintain Aspect Ratio box is checked the copy length box will be automatically updated as this box is updated.

3.2.2 Copy Length

This edit box allows the length of the copy to be selected. The units may be inches or mm depending on the value selected in the options dialog. If the Maintain Aspect Ratio box is checked the copy width box will be automatically updated as this box is updated.

3.2.3 Scale

This edit box allows a scale to be selected instead of using the copy width and length. The scale may range from 1% to 500%. As the scale value is changed the copy width and length will be automatically updated.

3.2.4 Maintain Aspect Ratio

Checking this box forces the aspect ratio of the original to be maintained regardless of the overall scale of the copy. Unchecking this box allows a copy to be scaled by different values in width and in length.

3.3 Sharpening

The sharpening option applies a sharpening filter to the data as it passes from the scanner to the printer. The sharpening filter has 3 settings:

None: This option bypasses the sharpening filter. It produces the fastest copy times and should typically be used with photographic originals where sharpening is not needed.

Low: This is the general setting for mixed originals with coloured areas and text or line art. It will generally improve the sharpness of the text in the original.

High: This setting should be used when the majority of the original is text or line art. It may cause moiré effects on coloured areas.

Note: Sharpening can not be selected when doing a mono copy.

3.4 Number of copies

This option allows the number of copies to be selected this may be anything between 1 and 20 inclusive.

3.5 Nested Copies

This is a paper saving feature that allows copies to be positioned side by side. The system will automatically assign the correct number of copies depending on the paper width set in the printer dialog. The software will also add a margin between each copy.

3.6 Brightness

The control adjusts the brightness of the copy. It works for mono, greyscale and colour copies.

3.7 Copy Button

The large green copy button starts the copy process. While copying it turns red and is inactive. When it turns green again another copy may be performed even though the printer may not have stopped printing.

3.8 Stop Button

The stop button is only active while the copy button is red and allows the current copy to be aborted at that point. It should be noted that the printer may continue printing for some time after the button has been pressed. If the Copy button has turned green but the user still wants to abort the copy, the copy file may be removed from the windows printer queue in the normal way.

3.9 Rewind

This button rewinds the original to the staging position.

3.10 Printer

This button displays the printer dialog.

3.11 Scanner

This button displays the scanner dialog.

3.12 Options

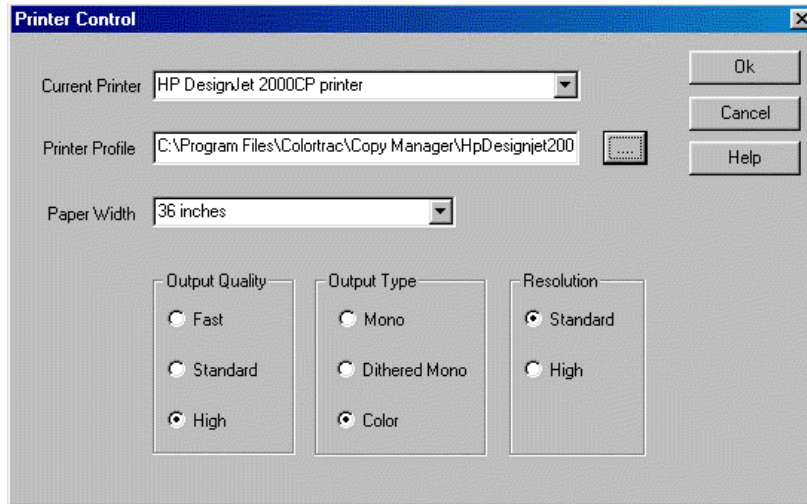
This button displays the options dialog.

3.13 Help

This button displays the help text.

4 Printer Dialog

This section details the commands in the Printer Control Dialog shown:



4.1 Current Printer

This drop down box displays all the currently installed Windows printers. It allows the appropriate printer to be chosen for Copy Manager. Although Copy Manager allows you to select any installed Windows printer it only has specific knowledge of a small number, for all other printers it will use a generic controller. It will notify the selection of the generic driver when the Ok button is pressed. Typically using the generic controller rather than a specific controller will mean that the Copy Manager may not be able to fully control the Quality level and any other unusual features of the printer.

4.2 Printer Profile

The printer profile file name may either be entered directly into the edit box or located using the browse button. This icc profile file name should be of the form “*.icm”, typically the name part of the file name will indicate the printer type and model number along with the paper and ink used. It should be noted that no profiles are necessary for mono only printers.

See section 7 for more details on printer profiles.

4.3 Paper Width

This option allows the current paper width to be selected. This value is only used in the calculation of the number of nested copies.

4.4 Output Quality

This option allows the output quality of the copy to be selected. The control allows the selection of fast, standard or high. These generic terms are mapped to specific printers output capabilities automatically by Copy Manager. Generally the quality should be set to high for HP plotters and to standard for Encad plotters.

4.5 Output Type

This option controls the type of copy performed. These are:

Mono: this is a black and white only copy.

Dithered mono: this is a greyscale copy.

Colour: this is a full colour copy.

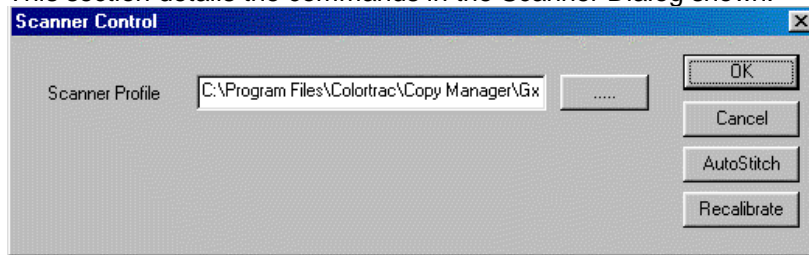
4.6 Resolution

This option allows the selection of the output resolution. The control allows standard or high resolution to be selected, these generic terms are mapped to a specific printers output capabilities. Generally standard will map to 300 dpi and high to 600 dpi. The default value for this control is standard.

Note: High resolution is not available on all printers.

5 Scanner Dialog

This section details the commands in the Scanner Dialog shown:



5.1 Scanner Profile

The scanner profile file name may either be entered directly into the edit box or located using the browse button. Typically the scanner profile file name is "ColortracGx3x0HiSat.icm"

5.2 Recalibrate

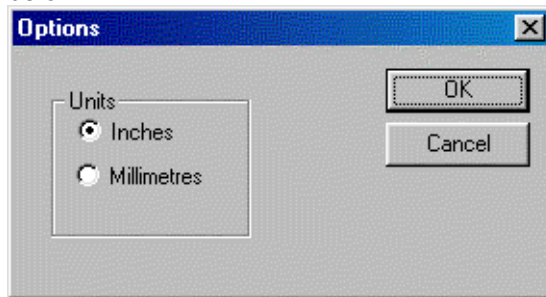
This option resets the scanner black and white points. It requires the glass to be cleaned and the profile target to be inserted before starting.

5.3 AutoStitch

This button re-stitches the scanner. It requires the auto stitch target to be inserted into the scanner before operation.

6 Options Dialog

This section details the commands in the Options Dialog shown below:



6.1 Units

This allows the default units the system operates in to be selected.

7 Printer Profiling

Copy Manager uses standard ICC profiles to define the output colour characteristics of a printer. The software ships with profiles for a number of popular printer/ink/paper combinations. To support a new paper/ink combination for a printer which is already supported by the software a new profile must be produced or acquired from the plotter manufacturer or other source. There are a number of software applications on the market capable of producing the profile these include:

Kodak Colorflow™
GretagMacbeth ProfileMaker™
Corel™ Draw 7 or 8

To produce a good quality profile a colorimeter will need to be used in conjunction with the profiling software listed. The two most popular makes of colorimeter being X-Rite™ and GretagMacbeth™. Each software package has a different method of producing a profile so it is recommended that you follow the instructions for your profiling software. The only modification that may be necessary to a particular printer profile is the adjustment of the GCR/UCR to give a better black level. An explanation of how to achieve this will be given in the profiling software instructions. For a relatively inexpensive solution Corel™ Draw and an X-rite digital Swatchbook produce satisfactory results.

If support is required for a new printer type/model which is not listed in the Readme file (this lists all currently supported printer types) then a number of tests should be carried out to determine if the generic print controller will support the printer. First the new printer's Windows driver should be installed and then the Copy Manager software run as normal. The new printer should then be selected in the Printer dialog of Copy Manager. Any profile should then be selected. A number of test plots should then be carried out using different resolution and quality settings. It should be noted that at this point the colour quality may be poor. If all the settings function adequately then profiles for the paper/ink combinations should be

produced as detailed previously. If the printer fails to produce any output then contact your Colortrac distributor who may have details on new or planned printer support.